



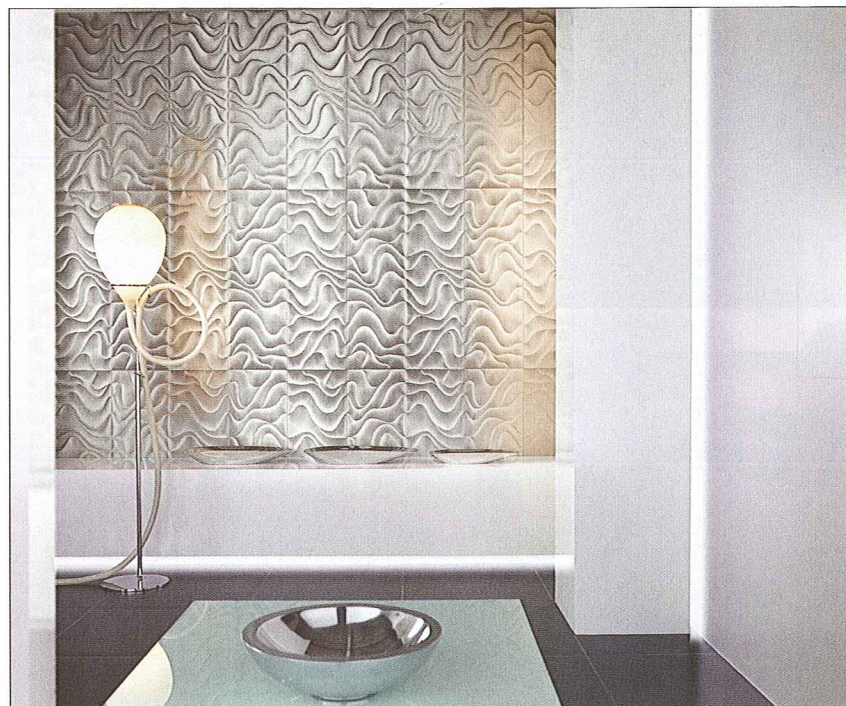
Cerim: Greenwood

The Greenwood collection of rustic floor tiles by Cerim expands on the theme of ceramic simulating wood. Greenwood is inspired by the wood processing method based on pickling and aniline dyes (highly penetrating but less used nowadays). The tiles are made of glazed porcelain stoneware. The surface structure recalls the effects of counter-blade cutting, while the design is based on oak wood, in five new colours creating attractive combinations. Greenwood is available in two formats: 165 by 664 and 333 by 664mm. Suitable for both residential and commercial use, it comes in five colours: Burly (shown), Limegreen, Snow, Taupe and Sandybrown.



Rex Ceramiche: I Marmi

The Rex portfolio of porcelain stoneware interpretations of precious natural materials has been enriched by a new collection: I Marmi. This integrates and completes the project already started with the series I Bianchi, inspired by certain precious marbles. The inspiration comes from materials of European and Asian origin, historically worked in the industrial factories. The study on the material and colour has enabled to identify a starting structure to which different colours are applied, to create new aesthetic effects. I Marmi is available in Marble Grey, Marble Brown, Marble Gold and Marble Black in both gloss and matt surface finishes. It comes in three formats - 600 by 1,200, 600 by 600 and 450 by 450mm - plus 30 by 150mm mosaics mounted on 300 by 300mm sheets, and 30 by 30mm 3D mosaics mounted on 300 by 300mm sheets.



Villeroy & Boch: Mémoire Océane

Mémoire Océane is a modern concept for walls and floors with attractive, three-dimensional reliefs and striking naturalistic patterns. The range has harmonious, nuanced colouring, finished off with metallic effects. The basic tiles of the Mémoire Océane range are available in white, dark blue and light gray and possess a fine, three-dimensional surface texture. The décor tiles have three different 3D curved reliefs. Each décor is available in one colour. Basic and décor tiles for the wall are available in two modular format series. The choices include rough-polished basic tiles of porcelain stoneware in 300 by 900mm and décor tiles in 300 by 900 and 150 by 900mm in semi-gloss nonvitreous ceramic, as well as three bronze-coloured metallic semi-gloss décors in 300 by 900 and 150 by 900mm. Along with this, the basic tiles are also available in a new format of 250 by 700mm and décor tiles in 250 by 700 and 125 by 700mm.



Casa Dolce Casa: Velvet

The precious marbles of Venice inspired Velvet range of porcelain tiles by Casa Dolce Casa. Velvet is smooth to the touch and comes in five attractive shades (oyster, ecru, charcoal, taupe, platinum). A new 800 by 800mm tile has been added to the sizes available, specifically for commercial use. Other formats are 400 by 800, 400 by 400, 600 by 600 and 300 by 600mm, plus 50 by 50mm and 25 by 100mm mosaic on 300 by 300mm sheets. Casa Dolce Casa is represented in the UK by Kevin Ingledew. T: 07711 698771. W: www.casadolcecasa.com. E: customer@casadolcecasa.com